



**India Meteorological Department  
(Ministry of Earth Sciences)**

**BULLETIN NO. 2 (ARB/02/2022)**

**TIME OF ISSUE:1430 HOURS IST**

**DATED: 12.08.2022**

**FROM: INDIA METEOROLOGICAL DEPARTMENT (FAX NO. 24643965/24699216/24623220)**

**TO: CONTROL ROOM, NDM, MINISTRY OF HOME AFFAIRS (FAX.NO. 23093750)**

**CONTROL ROOM NDMA (FAX.NO. 26701729)**

**CABINET SECRETARIAT (FAX.NO.23012284, 23018638)**

**PS TO HON'BLE MINISTER FOR S & T AND EARTH SCIENCES (FAX NO.23316745)**

**SECRETARY, MOES (FAX NO. 24629777)**

**H.Q. (INTEGRATED DEFENCE STAFF AND CDS) (FAX NO. 23005137/23005147)**

**DIRECTOR GENERAL, DOORDARSHAN (23385843)**

**DIRECTOR GENERAL, AIR (23421105, 23421219)**

**PIB MOES (FAX NO. 23389042)**

**UNI (FAX NO. 23355841)**

**D.G. NATIONAL DISASTER RESPONSE FORCE (NDRF) (FAX NO. 26105912, 2436 3260)**

**DIRECTOR, PUNCTUALITY, INDIAN RAILWAYS (FAX NO. 23388503)**

**CHIEF SECRETARY, GUJARAT (FAX NO. 079-23250305)**

**CHIEF SECRETARY, DAMAN & DIU (FAX NO. 0260-2230775)**

**CHIEF SECRETARY, DADRA & NAGAR HAVELI (FAX NO. 0260-2645466)**

**CHIEF SECRETARY, GOA (FAX NO. 0832-2415201)**

**CHIEF SECRETARY, MAHARASHTRA (FAX NO. 022- 22028594)**

**CHIEF SECRETARY, KARNATAKA (FAX NO. 080-22258913)**

**CHIEF SECRETARY, KERALA (FAX NO. 0471-2327176)**

**ADMINISTRATOR, LAKSHADWEEP ISLANDS (FAX NO. 0413-262184)**

**CHIEF SECRETARY, TAMILNADU (FAX NO. 044-25672304)**

**Sub: (A) Depression over northeast Arabian Sea and (B) Likely formation of depression over northwest Bay of Bengal around 14<sup>th</sup> August**

**(A) Depression over northeast Arabian Sea**

The depression over northeast Arabian Sea moved westwards with a speed of 18 kmph during past 3 hours and lay centered at 1130 hours IST of today, the 12<sup>th</sup> August, 2022 near latitude 22.5°N and longitude 66.0°E, about 310 km west-southwest of Naliya (Gujarat), 400 km west-northwest of Porbandar (Gujarat), 290 km south-southwest of Karachi (Pakistan) and 620 km east-southeast of Chahbahar (Iran).

It is very likely to move slowly west-northwestwards away from Indian coast during next 24 hours.

**Warnings:**

**(i) Rainfall (warning graphics enclosed)**

Light to moderate rainfall at a few places is likely over Saurashtra & Kutch and Gujarat region during next 24 hours.

**(ii) Wind warning:**

**12<sup>th</sup> August:** Squally wind speed reaching 45-55 kmph gusting to 65 kmph is very likely over northeast & adjoining central Arabian Sea. Squally wind speed reaching 40-50 kmph gusting to 60 kmph is very likely along & off Gujarat, Maharashtra and Karnataka coasts.

**13<sup>th</sup> & 14<sup>th</sup> August:** Squally wind speed reaching 45-55 kmph gusting to 65 kmph is very likely over northwest and adjoining westcentral Arabian Sea. Squally wind speed reaching 40-50 kmph gusting to 60 kmph is very likely over northeast and adjoining eastcentral Arabian Sea, along & off Gujarat, Maharashtra and Karnataka coasts.

**(iii) Sea condition**

**12<sup>th</sup> August:** Sea condition is likely to be rough to very rough over northeast & adjoining northwest Arabian Sea, central Arabian Sea and along & off Gujarat, Maharashtra and Karnataka coasts.

**13<sup>th</sup> & 14<sup>th</sup> August:** Sea condition is likely to be rough to very rough over northwest and adjoining central Arabian Sea, northeast Arabian Sea and along & off Gujarat and Maharashtra coasts.

**(iv) Fishermen Warning**

Fishermen are advised not to venture into north & central Arabian Sea and along & off Gujarat and Maharashtra coasts during 12<sup>th</sup> to 14<sup>th</sup> August.

**(B) Likely formation of depression over northwest Bay of Bengal around 14<sup>th</sup> August**

A cyclonic circulation lies over west Myanmar and neighbourhood. Under it's influence, a low pressure area is likely to form over north Bay of Bengal around 13<sup>th</sup> August, 2022. It is likely to become more marked during subsequent 24 hours and move west-northwestwards thereafter.

Under it's influence, rainfall activity would increase over Gangetic west Bengal and Odisha on 13<sup>th</sup> and 14<sup>th</sup> August.

**The system is under continuous surveillance and the next message will be issued at 2030 hours IST of today, the 12<sup>th</sup> August, 2022.**

**(M. Sharma)**  
**Scientist D, Cyclone Warning, New Delhi**

*Copy to: ACWC Mumbai/ ACWC Kolkata/ ACWC Chennai/ CWC Bhubaneswar/CWC Visakhapatnam/CWC Ahmedabad/ MO Port Blair/MC Raipur/MC Bhopal/MC Hyderabad/RMC Nagpur/MC Goa/MC Bengaluru/CWC Thiruvananthapuram*

**LEGEND: Heavy Rainfall:** 64.5 to 115.5mm, **Very Heavy Rainfall:** 115.6 to 204.4mm **Most Places:** more than 76% of total stations, **Isolated Places:** Less than 25% of total



## OBSERVED AND FORECAST TRACK OF DEPRESSION OVER NORTHEAST ARABIAN SEA BASED ON 0600 UTC OF 12<sup>th</sup> AUGUST, 2022



DATE/TIME IN UTC

IST=UTC + 0530

L: LOW PRESSURE AREA

WML: WELL MARKED LOW PRESSURE AREA

D: DEPRESSION (17-27 KT)

DD: DEEP DEPRESSION (28-33 KT)

CS: CYCLONIC STORM (34-47 KT)

SCS: SEVERE CYCLONIC STORM (48-63KT)

VSCS: VERY SEVERE CYCLONIC STORM (64-89 KT)

ESCS: EXTREMELY SEVERE CYCLONIC STORM (90-119 KT)

SuCS: SUPER CYCLONIC STORM ( $\geq$  120 KT)



LESS THAN 34 KT



34-47 KT



$\geq$  48 KT



OBSERVED TRACK



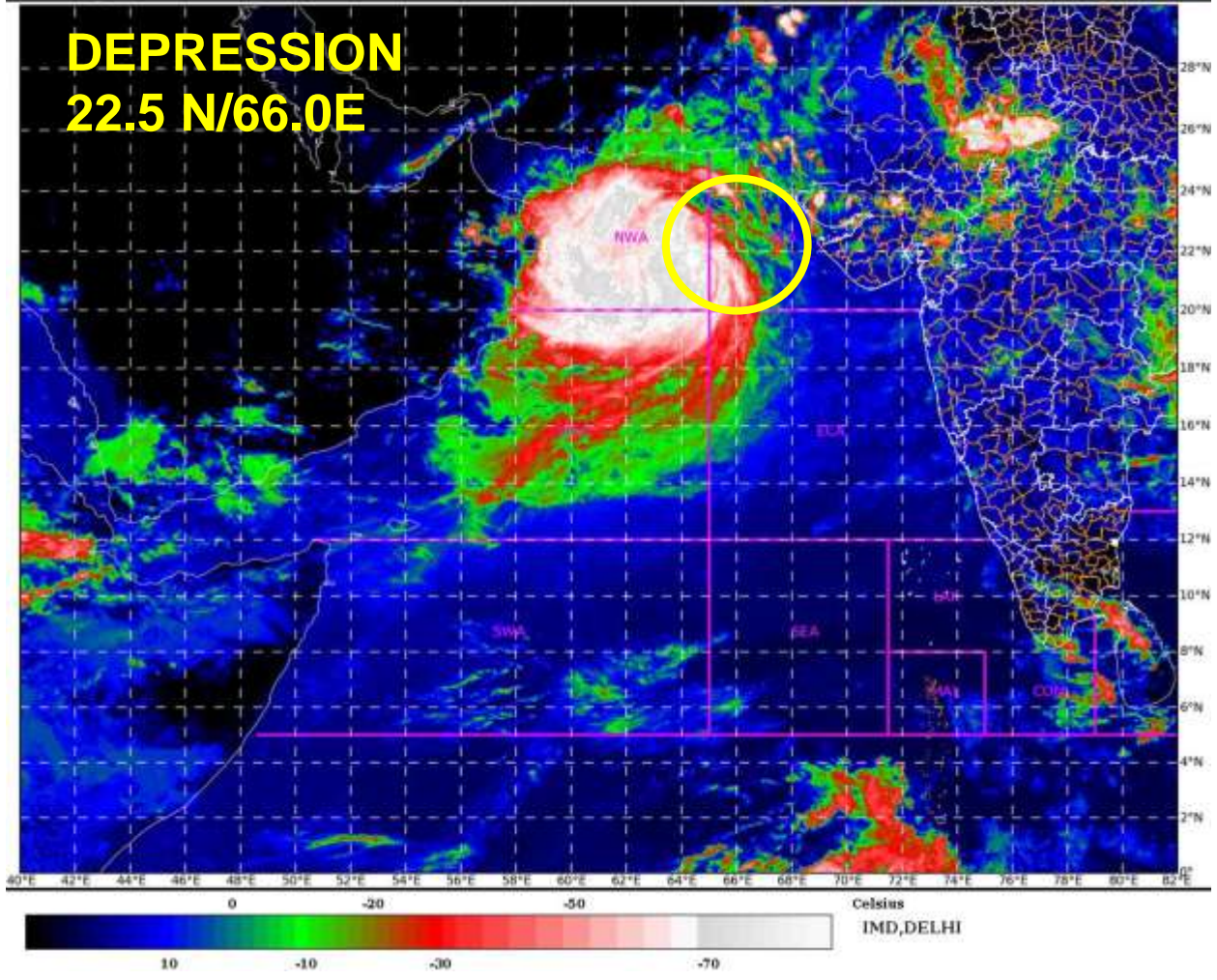
FORECAST TRACK



CONE OF UNCERTAINTY

SAT : INSAT-3D IMG  
IMG\_TIR1\_TEMP 10.8 um  
ARABIAN SEA

12-08-2022/(0800 to 0826) GMT  
12-08-2022/(1330 to 1356) IST



## Fishermen Warning Graphics

**DAY 1: 12.08.2022/11:30 AM to 13.08.2022/05:30 AM**



**DAY 2: 13.08.2022/05:30 AM to 14.08.2022/05:30 AM**



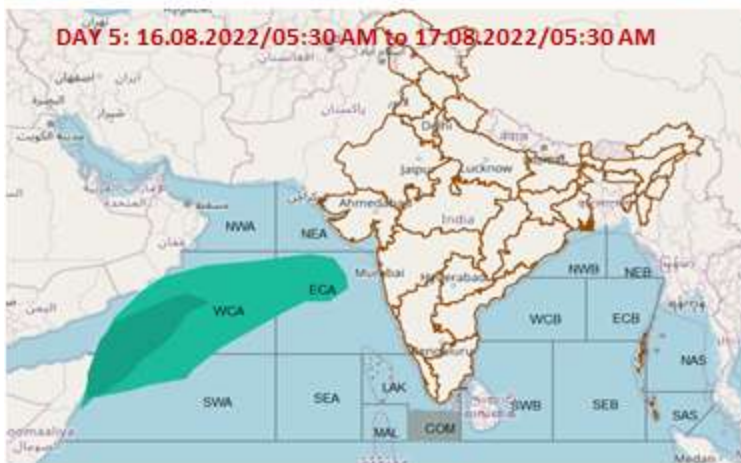
**DAY 3: 14.08.2022/05:30 AM to 15.08.2022/05:30 AM**



**DAY 4: 15.08.2022/05:30 AM to 16.08.2022/05:30 AM**



**DAY 5: 16.08.2022/05:30 AM to 17.08.2022/05:30 AM**



	Squally WX with wind speed 45-55 gusting to 65 kmph
	Squally wind speed 45-55kmph gusting to 65 kmph
	Squally wind speed 50-60kmph gusting to 70 kmph

## Probability of exceedance of maximum sustained winds $\geq 45$ kmph

**DAY 1: 12.08.2022/11:30 AM to 13.08.2022/05:30 AM**



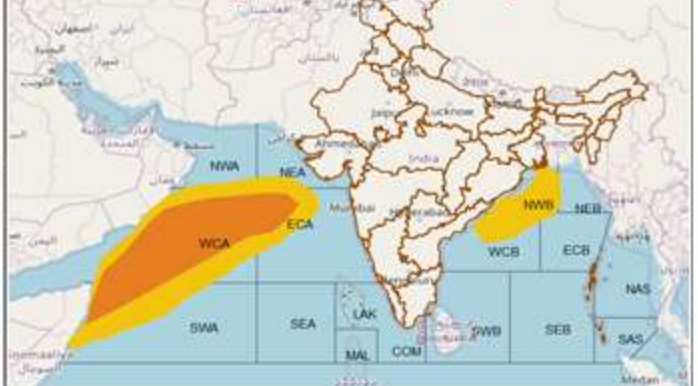
**DAY 2: 13.08.2022/05:30 AM to 14.08.2022/05:30 AM**



**DAY 3: 14.08.2022/05:30 AM to 15.08.2022/05:30 AM**



**DAY 4: 15.08.2022/05:30 AM to 16.08.2022/05:30 AM**



**DAY 5: 16.08.2022/05:30 AM to 17.08.2022/05:30 AM**



Probability of exceedance	
	Low (1-33%)
	Moderate (34-67%)
	High (68-100%)